



Inverted V.C. Flow Study- F Tuba

Nick Beltchev

$\text{♩} = 60$

1.

First musical staff in bass clef. It contains a sequence of notes: G2, A#2, B2, C#3, D3, E3, F3, G3. A slur covers the notes from G2 to G3. The staff ends with a double bar line and a fermata over the final G3 note.

Second musical staff in bass clef. It contains a sequence of notes: G2, A2, Bb2, C3, Bb2, A2, Gb2. A slur covers the notes from G2 to Gb2. The staff ends with a double bar line and a fermata over the final Gb2 note.

Third musical staff in bass clef. It contains a sequence of notes: G2, A2, B2, C3, D3, E#3, F3. A slur covers the notes from G2 to F3. The staff ends with a double bar line and a fermata over the final F3 note.

Fourth musical staff in bass clef. It contains a sequence of notes: G2, Ab2, Bb2, Cb3, Bb2, A2, Gb2. A slur covers the notes from G2 to Gb2. The staff ends with a double bar line and a fermata over the final Gb2 note.

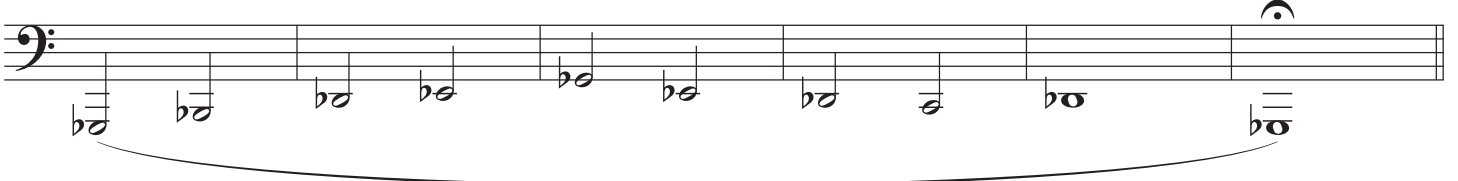
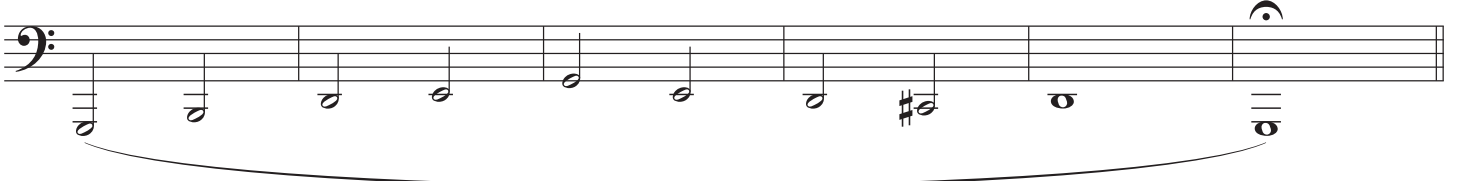
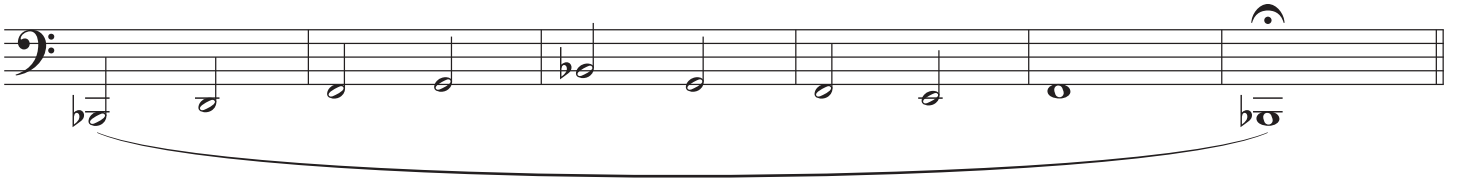
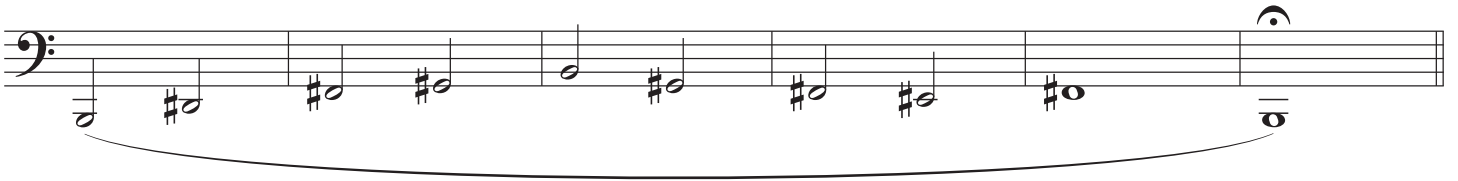
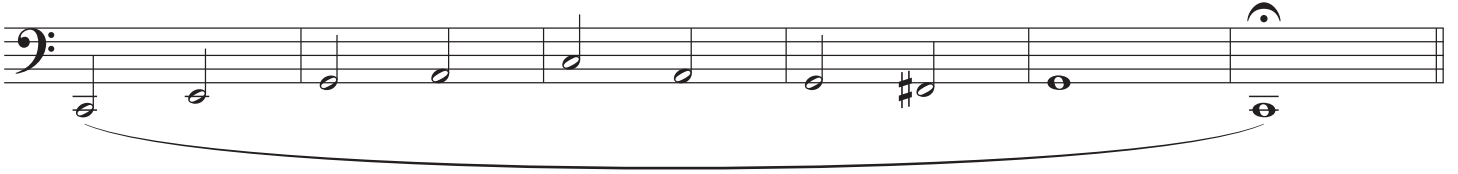
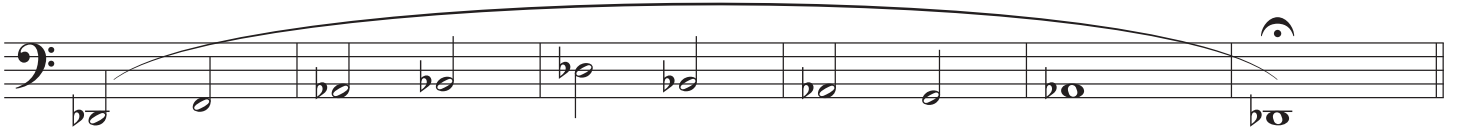
Fifth musical staff in bass clef. It contains a sequence of notes: G2, A2, B2, C3, D3, E3, F3. A slur covers the notes from G2 to F3. The staff ends with a double bar line and a fermata over the final F3 note.

$\text{♩} = 64$

Sixth musical staff in bass clef, starting with a '2.' marking. It contains a sequence of notes: G2, A2, B2, C3, D3, E3, F3, G3. A slur covers the notes from G2 to G3. The staff ends with a double bar line and a fermata over the final G3 note.

Seventh musical staff in bass clef. It contains a sequence of notes: G2, A#2, B2, C#3, D3, E3, F#3, G3. A slur covers the notes from G2 to G3. The staff ends with a double bar line and a fermata over the final G3 note.

Eighth musical staff in bass clef. It contains a sequence of notes: G2, A2, Bb2, C3, Bb2, A2, Gb2. A slur covers the notes from G2 to Gb2. The staff ends with a double bar line and a fermata over the final Gb2 note.



A single musical staff in bass clef. The staff contains a sequence of notes: G2, F2, E2, D2, C2, B1, A1, G1, F1, E1, D1, C1. A long slur covers the entire staff from the first note to the last.

$\text{♩} = 64$

3.

A musical staff in bass clef, starting with a measure rest. The staff contains a sequence of notes: G2, F2, E2, D2, C2, B1, A1, G1, F1, E1, D1, C1. A long slur covers the entire staff from the first note to the last.

A musical staff in bass clef. The staff contains a sequence of notes: G2, F2, E2, D2, C2, B1, A1, G1, F1, E1, D1, C1. A long slur covers the entire staff from the first note to the last.

A musical staff in bass clef. The staff contains a sequence of notes: G2, F2, E2, D2, C2, B1, A1, G1, F1, E1, D1, C1. A long slur covers the entire staff from the first note to the last.

A musical staff in bass clef. The staff contains a sequence of notes: G2, F2, E2, D2, C2, B1, A1, G1, F1, E1, D1, C1. A long slur covers the entire staff from the first note to the last.

A musical staff in bass clef. The staff contains a sequence of notes: G2, F2, E2, D2, C2, B1, A1, G1, F1, E1, D1, C1. A long slur covers the entire staff from the first note to the last.

A musical staff in bass clef. The staff contains a sequence of notes: G2, F2, E2, D2, C2, B1, A1, G1, F1, E1, D1, C1. A long slur covers the entire staff from the first note to the last.

A musical staff in bass clef. The staff contains a sequence of notes: G2, F2, E2, D2, C2, B1, A1, G1, F1, E1, D1, C1. A long slur covers the entire staff from the first note to the last.

